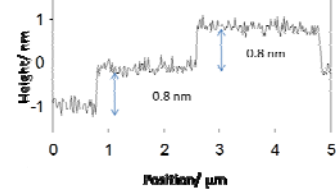
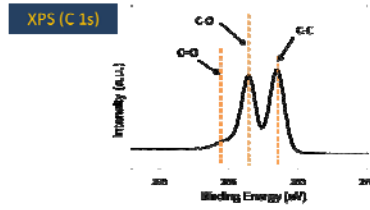
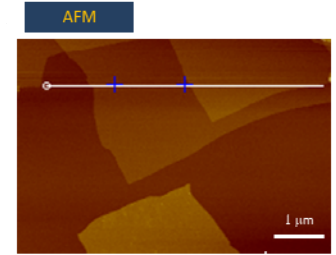
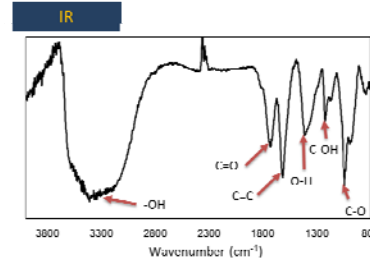
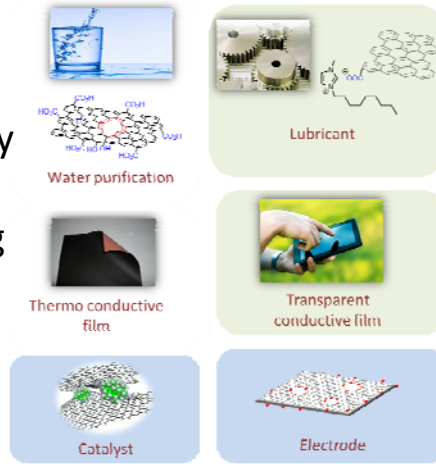


Preparation and application of wood-derived nanocarbons (WNCs)

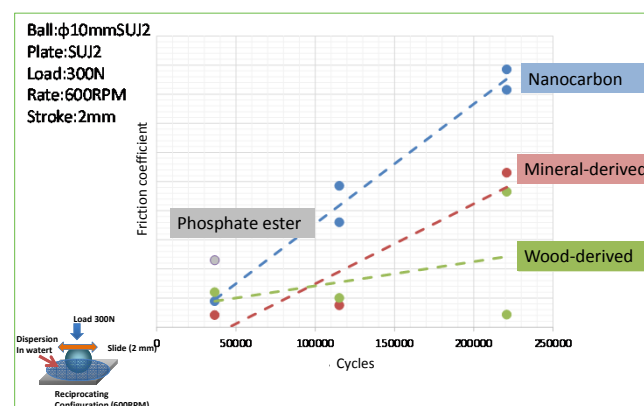
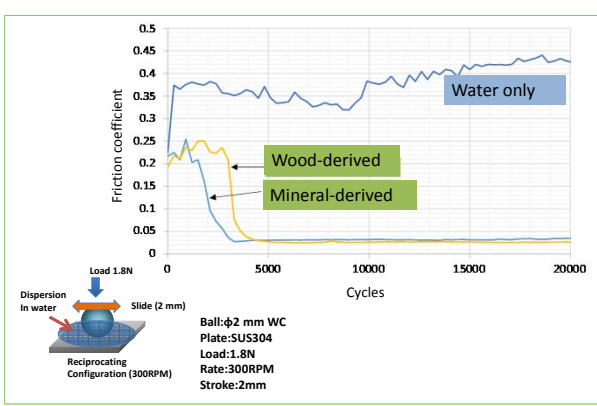
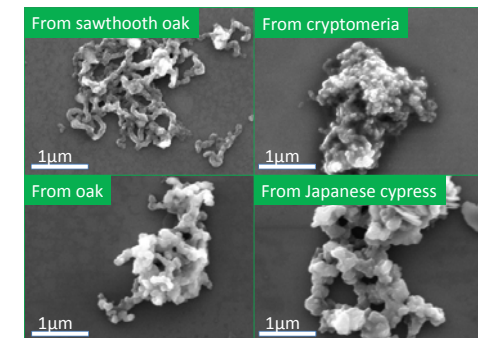
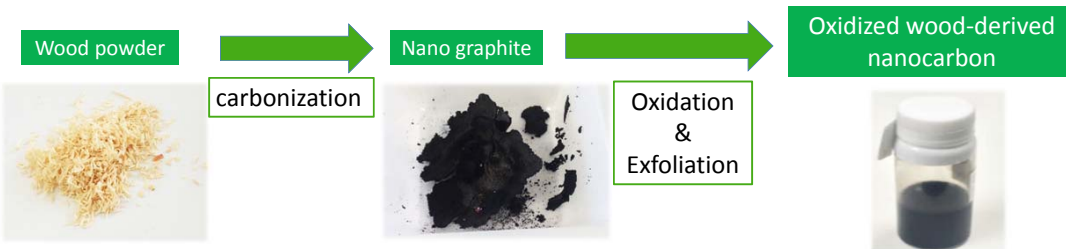
Yuta Nishina, Hiroshi Kinoshita
Okayama University

Graphene Oxide

- Water soluble
- Single layer
- Oxygen functionality
- High surface area
- Mechanically strong



Wood-derived nanocarbon



This research was partly supported the Project of the NARO Bio-oriented Technology Research Advancement Institution (Integration research for agriculture and interdisciplinary fields)

