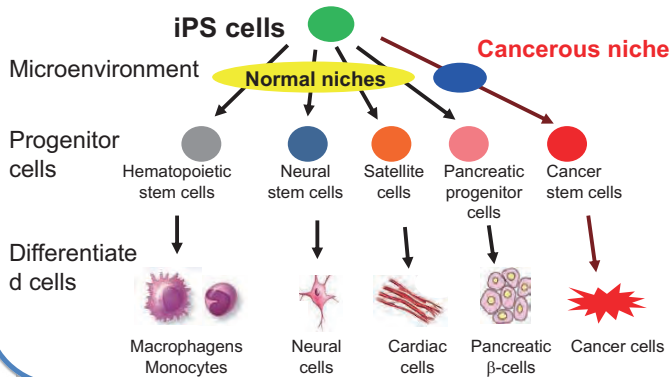


CSC model developed from iPSCs

Masaharu Seno, Akifumi Mizutani, Tomonari Kasai, Hiroshi Murakami
 Graduate school of Natural Science and Technology, Okayama University

Microenvironments and cell differentiation

Cancerous microenvironments direct differentiation of stem cells (iPSCs) into CSCs *in vivo*.

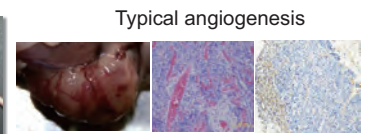


iPS cells cultured with the conditioned medium from various cancer cell lines

Transplantation into nude mice

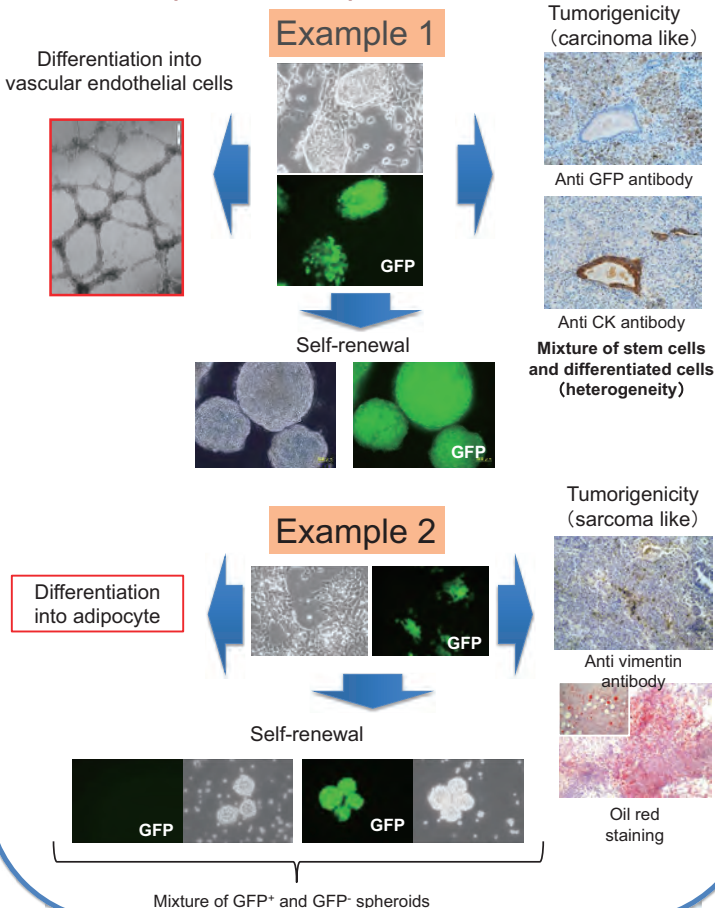


Malignant tumor



Anti CD31 antibody

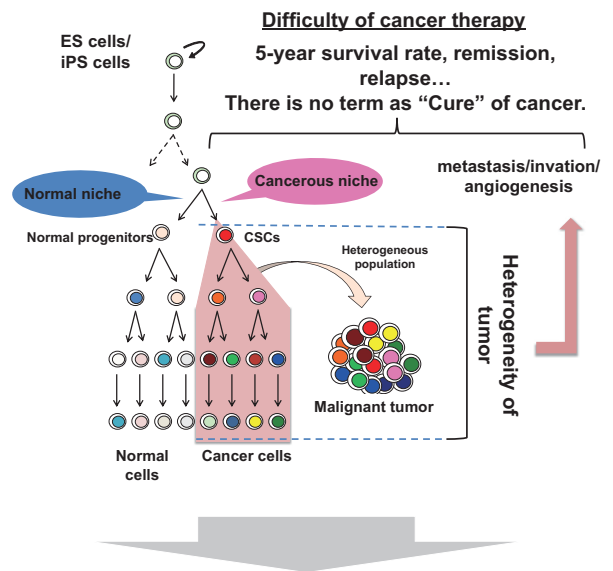
Characters of CSCs developed from iPSC cells (miPS-CSCs) and derived tumors



A concept of "Heterogeneity in tumor" arose from Cancer stem cell theory

Heterogeneity in tumor

An important character of cancer



Key to develop new strategies for Cancer therapy !

- Published in PLoS ONE 2012 vol.7 issue 4. e33544.
- In newspapers: Yomiuri, Mainichi, Sankei, Asahi, etc.
- On TV: NHK Okayama, Sanyo Broadcasting, TV Setouchi, TBS, etc.
- Featured in 'Close-up Gendai' (NHK-TV) on 7/3/2012, 'Shinso-Hodo Bankisha' (NTV-TV) on 10/14/2012
- LSIP began to support by fund. Nikkan-Kogyo 5/6/2013 & 7/10/2013, etc.