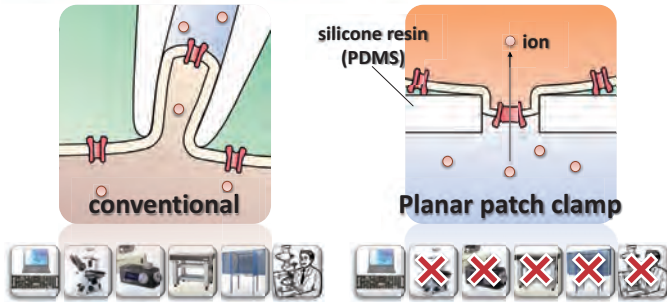


# Development of high throughput planar patch clamp system at low cost

Takahashi K, Fukasawa T, Kuniyasu K, Naruse K

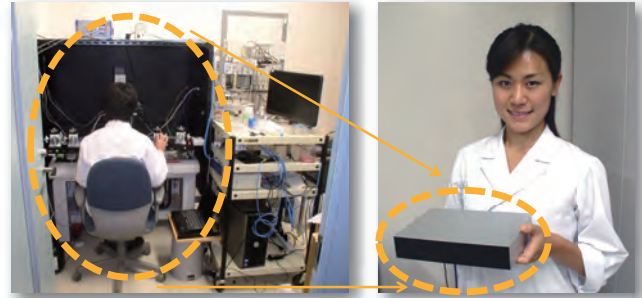
Okayama University Graduate School of Medicine, Dentistry and Pharmaceutical Sciences

## 1. What is planar patch clamp?



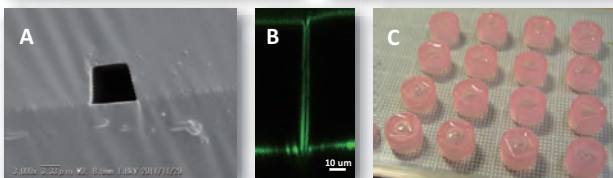
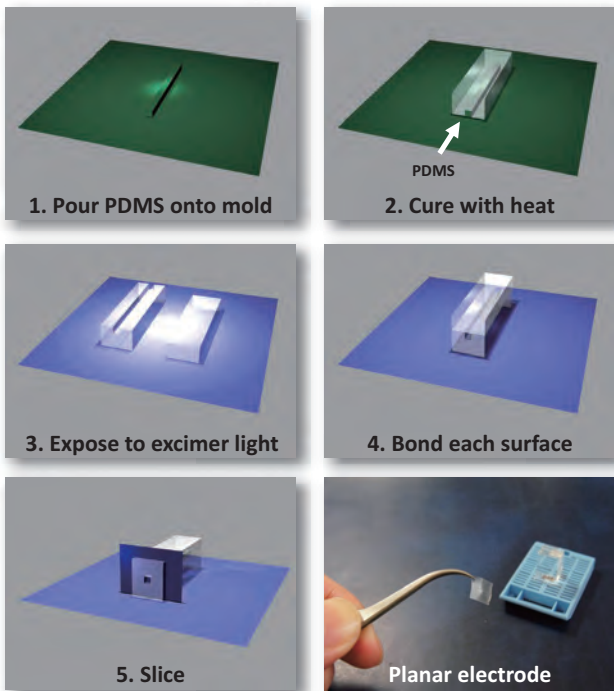
Easy to use, low cost

## 3. Planar patch clamp device



Small and simple

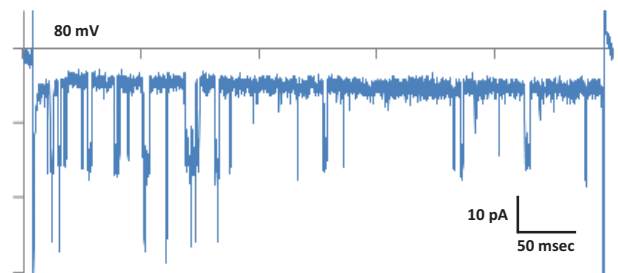
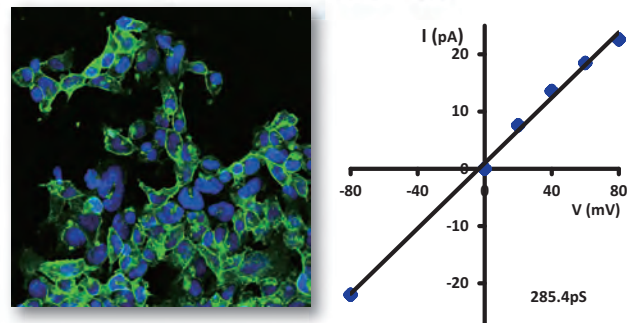
## 2. How to fabricate planar electrode (patented)



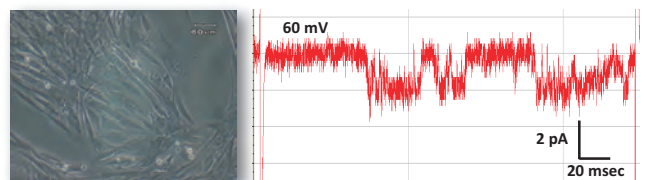
A, B: microscopic image of the pore, C: planar electrodes

High throughput

## 4. Recording of ion channel current



Recording from HEK293 cell transfected with BK channel



Recording from cardiomyocyte cell line H9c2

High precision recording

Application for academic research and education