

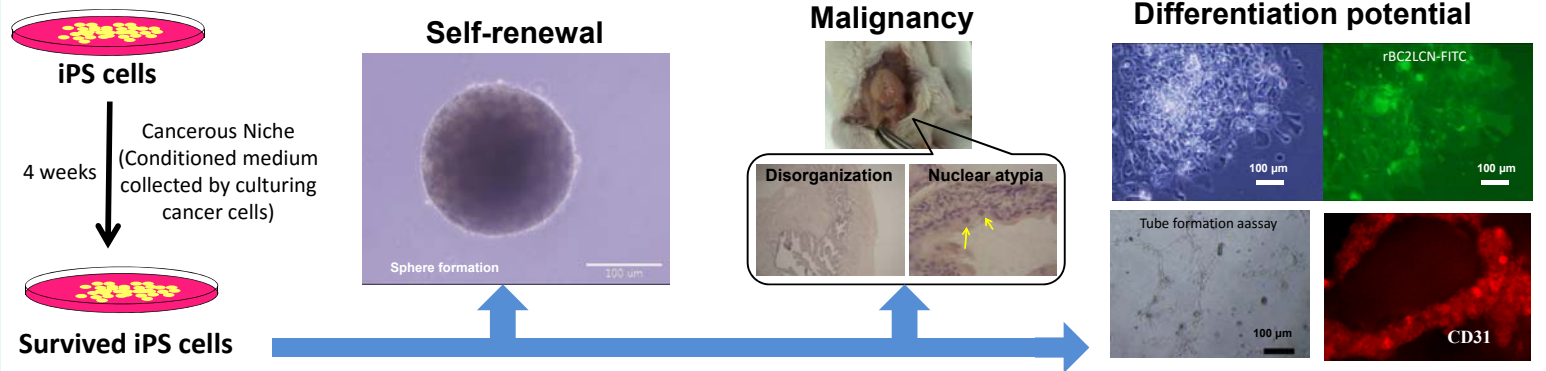
Animal models for cancer research using iPSCs

iPS 細胞を利用するがん研究用動物モデル

Masaharu Seno, Tomonari Kasai

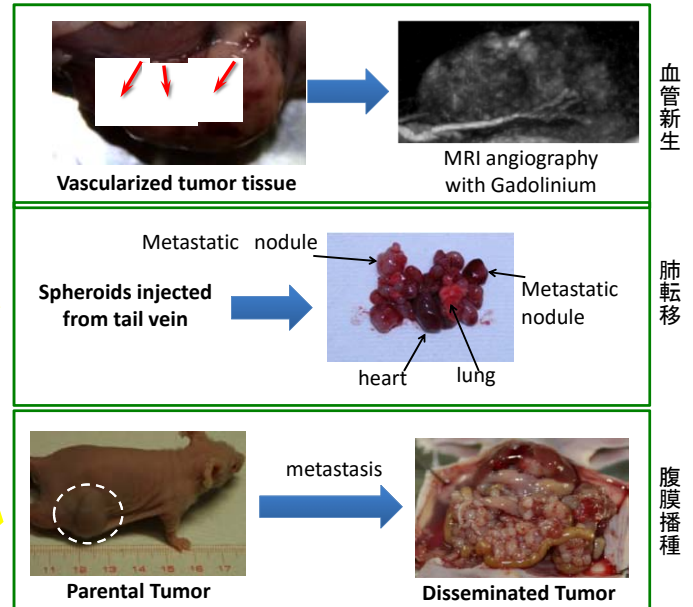
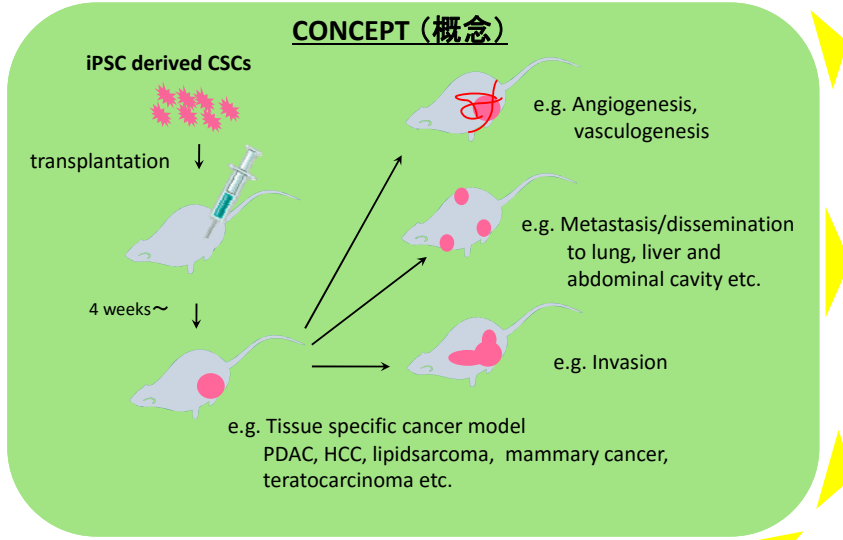
Division of Medical Bioengineering, Graduate School of Natural Science and Technology, Okayama University

Conversion of iPSC cells into CSCs



iPSC-CSC derived allograft/xenograft models

iPS細胞由来がん幹細胞を用いる腫瘍移植モデルの例



膵臓がんモデル

ヒト膵臓がん細胞株 (PK8, KLM1) の培養上清を用いて作成したがん幹細胞による

A Primary Tumour miPSC-CSC-PK8cm
B Primary Tumour miPSC-CSC-PK8cm
C Primary Tumour miPSC-CSC-KLM1cm
D Primary Tumour miPSC-CSC-KLM1cm

Pancreatic Ductal Adenocarcinoma (PDAC) model

肝臓がんモデル

ヒト肝臓がん細胞株の培養上清を用いて作成したがん幹細胞による

Primary culture
Liver cancer model

References in journals

- Am J Cancer Res. 2016 *in press*.
- Cancer Inform. 2016 Aug 16;15:163-78. doi: 10.4137/CIN.S39839. eCollection 2016.
- J Cancer. 2014 Jul 5;5(7):572-84. doi: 10.7150/jca.8865. eCollection 2014.
- J Stem cells Regen Med.10(1):2-7, 2014.
- Am J Cancer Res. 2014 Jan 15;4(1):80-8. eCollection 2014.
- Int J Cancer. 2013 Dec 3. doi: 10.1002/ijc.28648.
- PLoS One. 2012;7(4):e33544. doi: 10.1371/journal.pone.0033544.
- Gekkan "Kagaku", Kagaku Dojin, Vol.69, No.3,70-71, 2014.
- Saibokougaku, Shujyunsha, Vol.32 (No.3) March, 2013. pp.330-337.

Patent applications

- JP No. 2014-246457
- JP No. 2013-067058
- JP No. 2013-082671
- PCT出願:PCT/JP2014/057572
- PCT出願:PCT/JP2016/060309

News Releases

- Nikkan kogyo. March, 28, 2016
- City living. July, 4, 2014
- Nikkan kogyo. July, 8, 2014
- Nikkan kogyo. July, 11, 2014
- Sanyo. August, 2, 2014
- Nihon Keizai. September, 30, 2014
- Nikkan kogyo. September, 30, 2014
- Asahi. October, 2, 2014
- Kagaku. October, 10, 2014
- Nikkan kogyo. October, 16, 2014
- Yomiuri. October, 29, 2014
- Mainichi. October, 30, 2014

Coming soon!!
Our Lab in the US
USラボ オープン間近!!

Interested?
We are open to
collaborate with
you!
Please ask the
agents at the desk
or make contact
with the address
below.
お問合せは下記まで