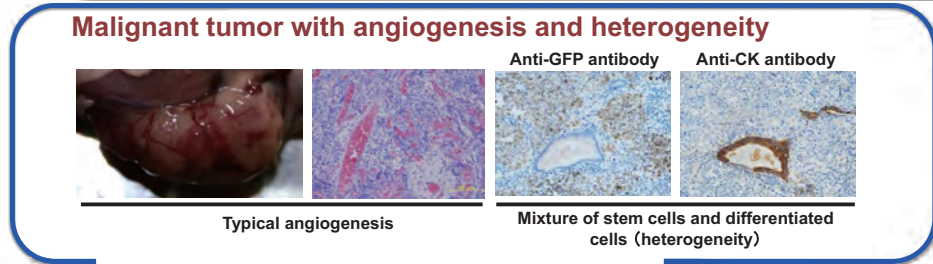
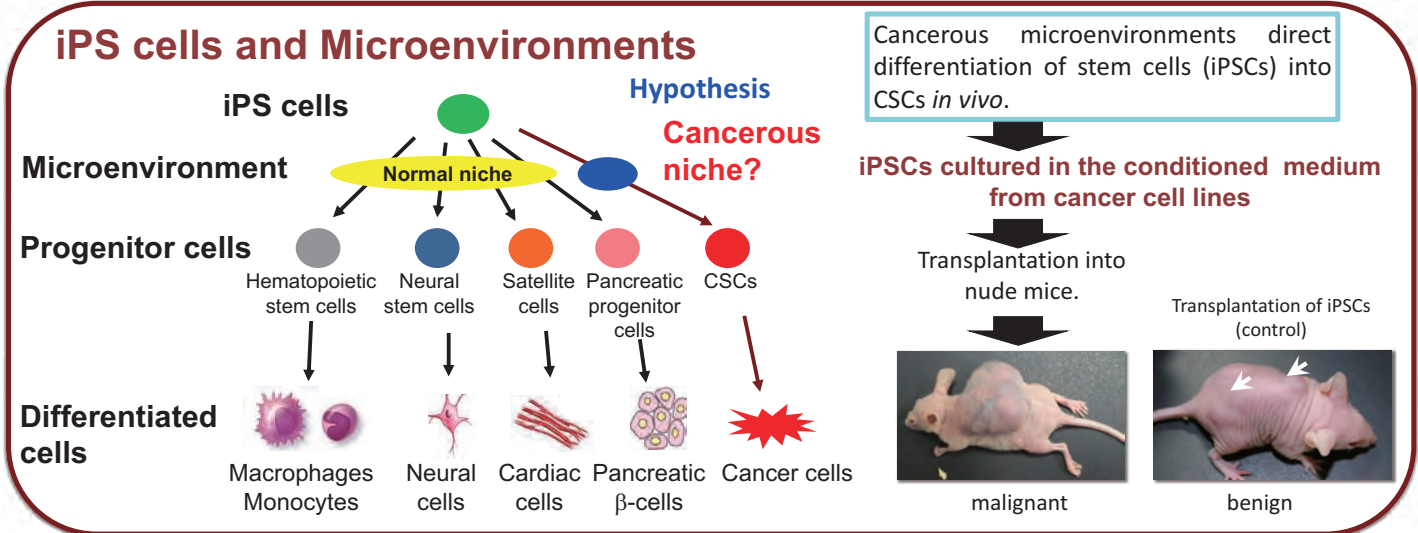


# CSC model developed from iPSCs

Masaharu Seno, Akifumi Mizutani, Tomonari Kasai, Hiroshi Murakami  
 Graduate school of Natural Science and Technology, Okayama University



**Tumor heterogeneity**  
 An important character of cancer

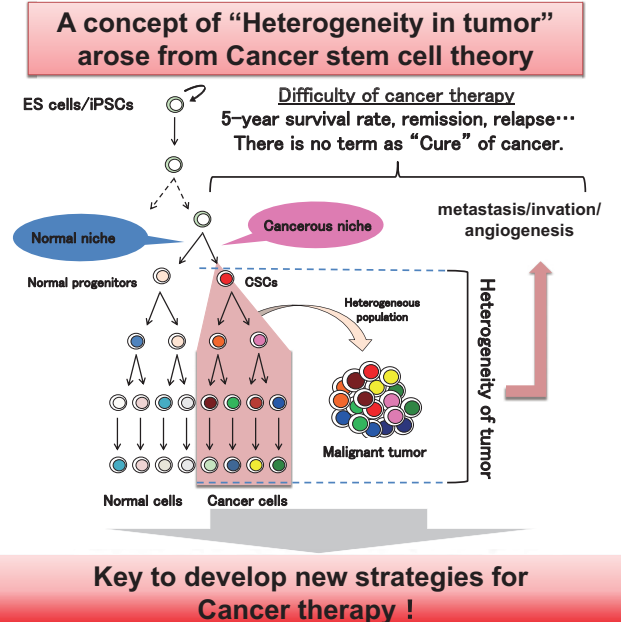
### Capacity of Self-renewal and differentiation

**Adherent culture**  
 Primary culture of cells derived from miPSC-CSCs tumor contained both stem cells and differentiated cells

**Suspension culture**  
 Stem cells grew as spheroids in suspension culture

### Tube formation on type-IV collagen

Magnified image  
 Heterogeneity in vascular structures



- Published in PLoS ONE 2012 vol.7 issue 4. e33544.
- In newspapers: Yomiuri, Mainichi, Sankei, Asahi, etc.
- On TV: NHK Okayama, Sanyo Broadcasting, TV Setouchi, TBS, etc.
- Featured in 'Close-up Gendai' (NHK-TV) on 7/3/2012, 'Shinso-Hodo Bankisha' (NTV-TV) on 10/14/2012 etc.