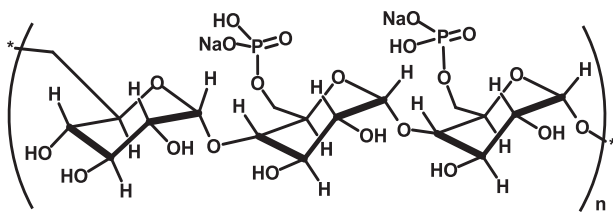
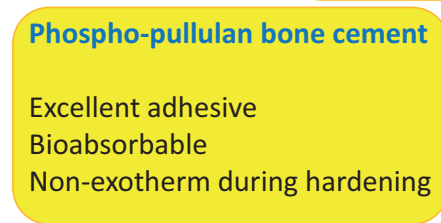
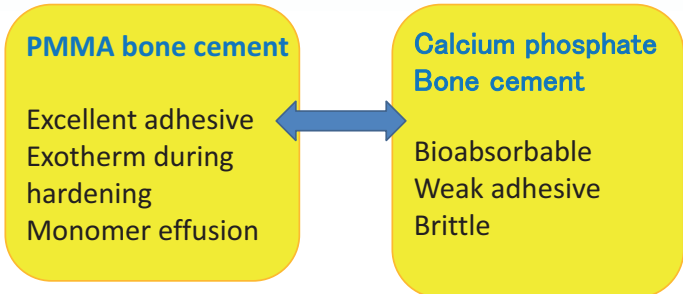
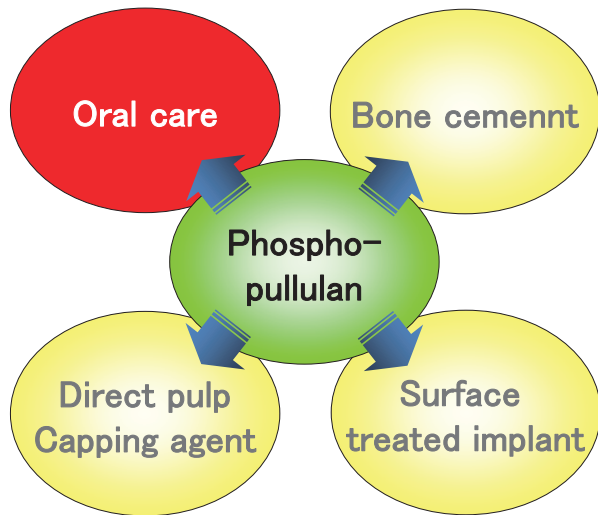


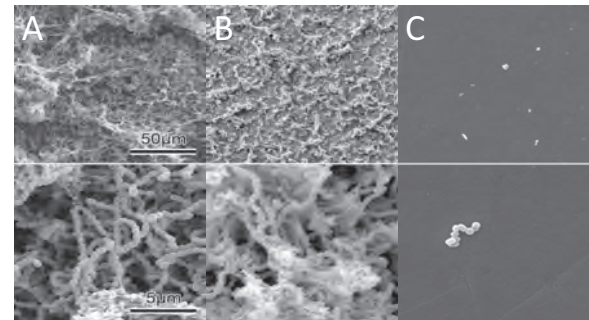
Phospho-pullulan for hard-tissue regeneration and reconstruction

Takumi OKIHARA,

Graduate school of Natural Science and Technology, Okayama University



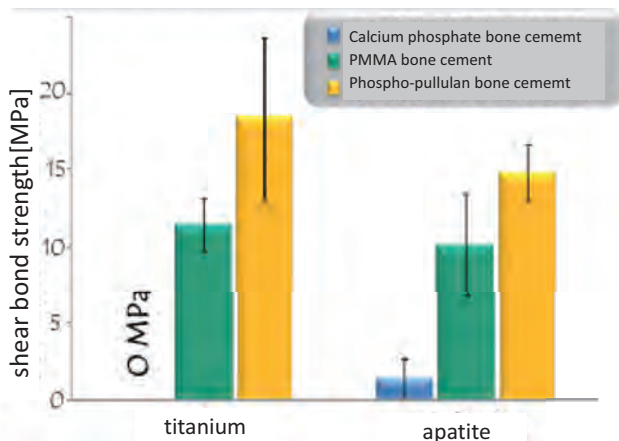
Phospho-pullulan was water-soluble polysaccharide synthesized from pullulan which was consisted of maltotriose units.



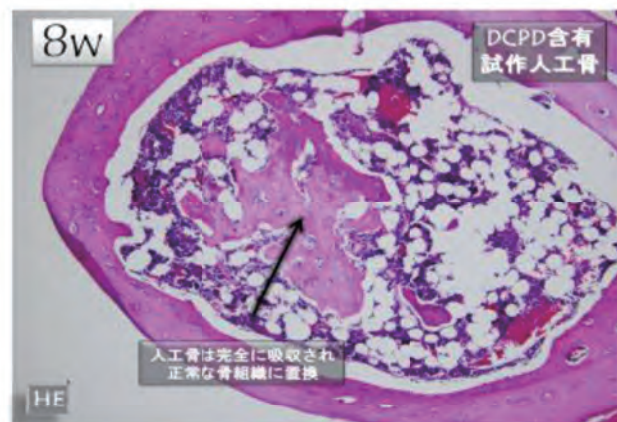
(A) untreated (B) 10% CPC (C) 0.01% CPC + 0.01% phospho-pullulan

Persistent antibacterial effect

Shear bond strength to titanium and apatite



Excellent adhesive



bioabsorbable bone substitution material